

750V DC

SQUARE-BODY FUSES/SPECIAL PURPOSE

SIZE: 122



Ratings

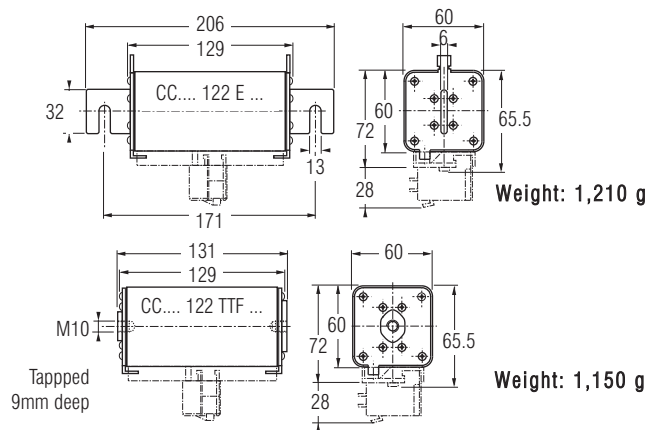
- 250 to 500 Amps
- 750vdc at 100kA
L/R=100mSec
- 900vdc 100kA
L/R=40mSec

Features/Benefits

- **Blown Fuse** indicator
- **Square** ceramic body
- **Full range** D.C. operation
- Bladed and tapped versions standard



➤ Dimensions



APPLICATIONS DATA

SIZE	CURRENT RATING I_N (A)	INTERRUPTING RATING	MAXIMUM I^2t @900V=L/R 40ms		WATTS LOSS		CATALOG NUMBER (1)	REF. NUMBER	
			$I_p=10I_N$	$I_p=50I_N$	0.8 I_N	I_N			
122	250	@ 750V DC 100kA L/R = 100ms	1.25x10 ⁶	250,000	25.5	46.7	CC 7,5 gRC 122 EF 0250	A087331	
	315		2x10 ⁶	400,000	31.5	58	CC 7,5 gRC 122 EF 0315	B087332	
	350		2.5x10 ⁶	500,000	35	64.5	CC 7,5 gRC 122 EF 0350	W221141	
	400		3.1x10 ⁶	600,000	40.5	74.5	CC 7,5 gRC 122 EF 0400	L089388	
	450		4x10 ⁶	800,000	49	90	CC 7,5 gRD 122 EF 0450	P220951	
	500		6.2x10 ⁶ *	1.25x10 ⁶ *	52	95	CC 7,5 gRD 122 EF 0500	Q220952	
	250		@ 900 V DC= 100kA L/R = 40ms	1.25 x10 ⁶	250,000	25.5	46.7	CC 7,5 gRC 122 TTF 0250	B090437
	315			2x10 ⁶	400,000	31.5	58	CC 7,5 gRC 122 TTF 0315	M085249
	350	2.5x10 ⁶		500,000	35	64.5	CC 7,5 gRC 122 TTF 0350	G220898	
	400	3.1x10 ⁶		600,000	40.5	74.5	CC 7,5 gRC 122 TTF 0400	C090438	
	450	4x10 ⁶		800,000	49	90	CC 7,5 gRD 122 TTF 0450	R220953	
	500	6.2x10 ⁶ *		1.25x10 ⁶ *	52	95	CC 7,5 gRD 122 TTF 0500	S220954	

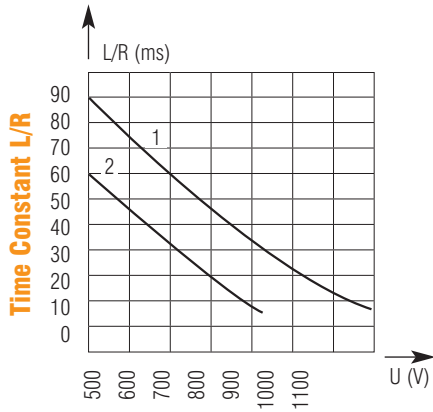
*MAX. I^2t @ 800V=, L/R=40ms

Microswitch: MC 3E 1-5N Ref. Number: D310020

750V DC

SQUARE-BODY FUSES/SPECIAL PURPOSE

DC Voltage Capabilities vs. Time Constant

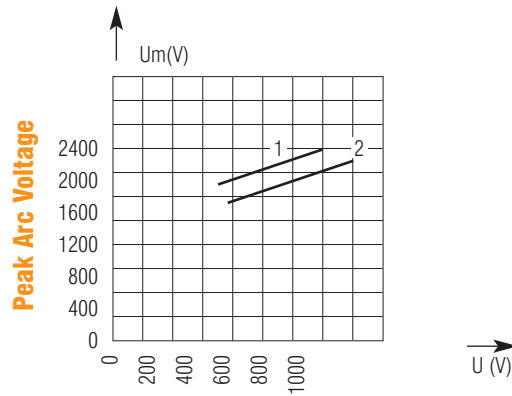


DC Voltage Capability

1-gRC-gRD (250-450A)
2-gRD 500A

Above: Curve indicates maximum permissible value of time constant L/R as a function of DC working voltage.

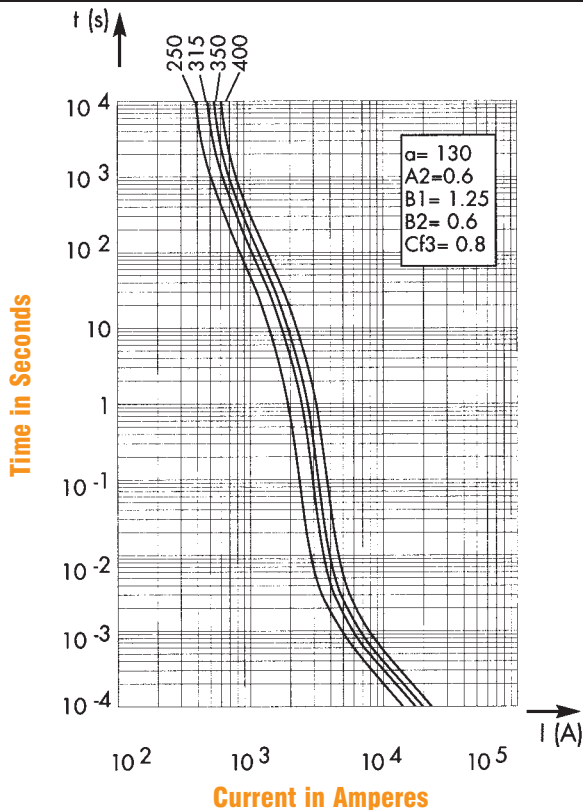
Peak Arc Voltage vs. Working Voltage



Circuit Voltage

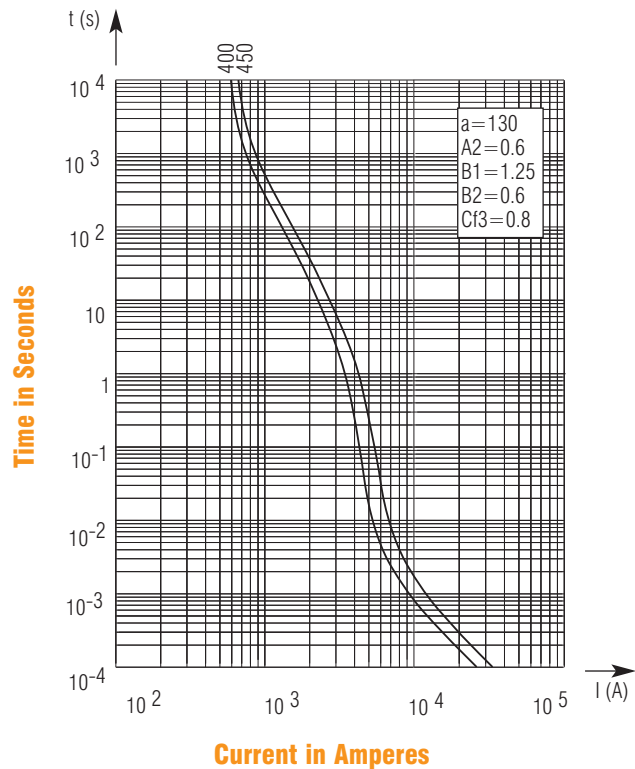
1-L/R = 100ms
2-L/R = 40ms

Melting Time-Current Data



Current in Amperes

Above: Curves indicate, for each rated current, pre-arcing (melting) time vs. R.M.S. pre-arcing (melting) current.



Current in Amperes

± 7% tolerance for mean pre-arcing (melting) current